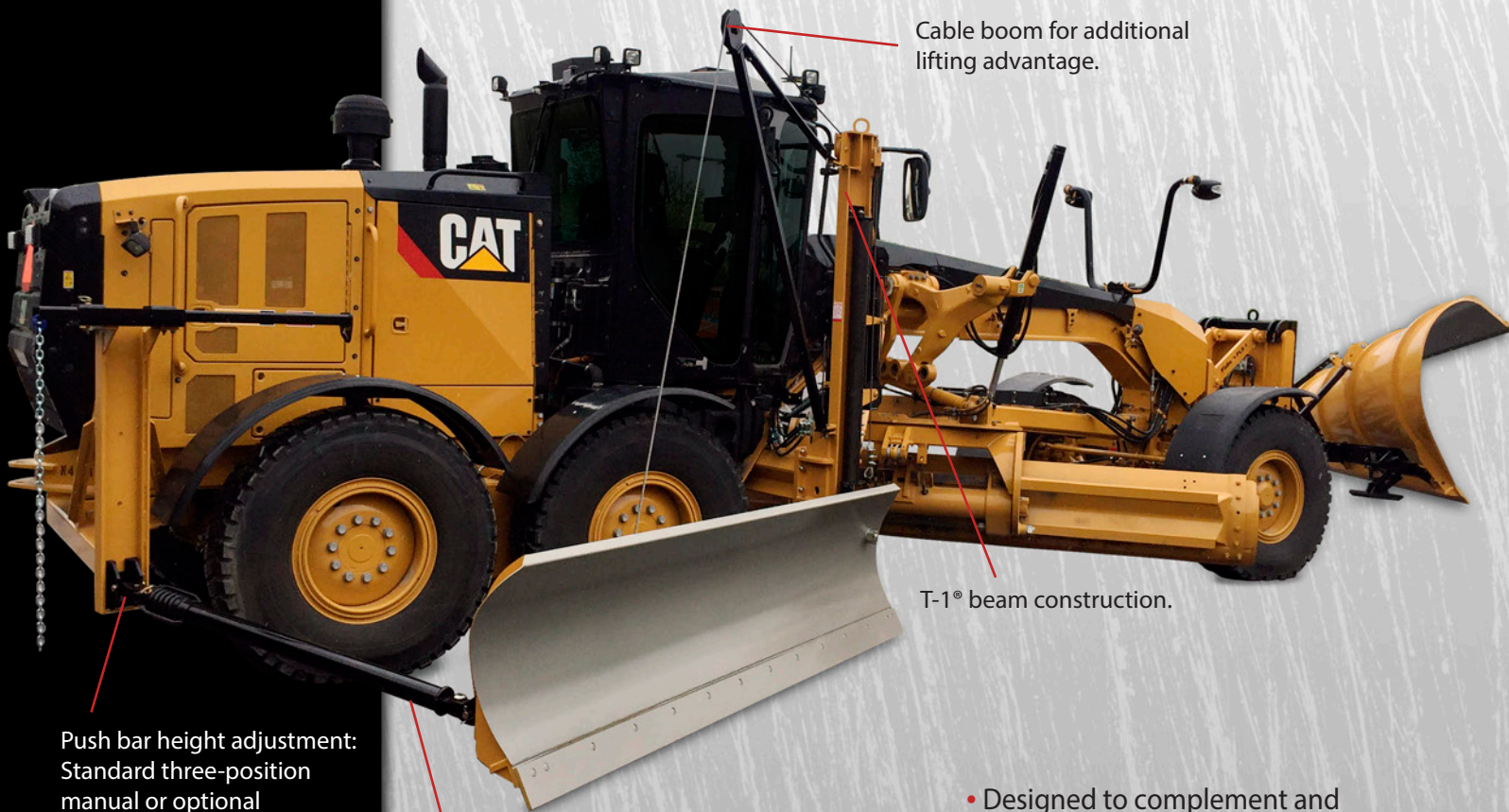




W Series

CABLE SNOW WING FOR CAT MOTOR GRADERS



Cable boom for additional lifting advantage.

T-1[®] beam construction.

Push bar height adjustment: Standard three-position manual or optional hydraulic lift.

Spring-cushioned telescoping push bar with safety shear pin.

- Designed to complement and expand the versatility of your motor grader.
- Time proven design for long-lasting performance.
- Double box reinforcement of wing moldboard for superior rigidity.
- High strength steels are used throughout: T-1[®], A607-50[®], 4140 Alloy, A-36.
- Hydraulic cylinders are tested to 8,000 psi.



Full length double-formed box reinforcement.



Tubular slide with heavy-duty 1-3/4" pivot bolt connection.

Falls SPECIFICATIONS

MODEL	W-12	W-14	W-14HD	W-16HD
Overall moldboard length	12' 6" (3.8m)	14' 6" (4.4m)	14' 6" (4.4m)	16' 6" (5m)
Cutting edge(s)	1/2" x 6" x 12' (2)	5/8" x 6" x 7' (2)	5/8" x 6" x 7' (2)	5/8" x 6" x 8'
Height, front moldboard	36" (.91m)	36" (.91m)	36" (.91m)	36" (.91m)
Height, rear moldboard	36" (.91m) optional 32" (.81m)	36" (.91m) optional 32" (.81m)	36" (.91m)	36" (.91m)
Moldboard thickness	8 ga. (5mm)	8 ga. (5mm)	8 ga. (5mm)	8 ga. (5mm)
Lift height, front	54" (1.4m)	54" (1.4m)	64" (1.4m)	64" (1.4m)
Lift height, rear	104" (2.64m)	104" (2.64m)	104" (2.64m)	104" (2.64m)
Rear slide adjustment	30" (.76m)	30" (.76m)	30" (.76m)	30" (.76m)
Sweep angle	30°- 50°	30°- 50°	30°- 50°	30°- 50°
Weight, moldboard	925 lbs. (420 kg)	1075 lbs. (488 kg)	1075 lbs. (488 kg)	1250 lbs. (568 kg)
Weight, moldboard & mountings	2650 lbs.(1,205 kg)	2800 lbs.(1,273 kg)	3200 lbs.(1,455 kg)	3425 lbs.(1,557 kg)
Valves required for operation	2 – standard 3 – w/hydraulic rear slide	2 – standard 3 – w/hydraulic rear slide	2 – standard 3 – w/hydraulic rear slide	2 – standard 3 – w/hydraulic rear slide

YOUR DEALER IS:

Specifications are subject to change without notice.

The policy and promise of Little Falls Machine, Inc. is continuing product improvement. Design change and structural alterations may occur without prior notice. Such changes will not sacrifice quality or product integrity.

*Falls® is a registered trademark of Little Falls Machine, Inc.
Little Falls Machine, Inc. is an equal opportunity employer.*



LITTLE FALLS MACHINE, INC.

300 Lindbergh Drive South
 Little Falls, MN 56345
 Phone 800-772-PLOW
 (320) 632-9266
 Fax (320) 632-3484
www.fallsplovs.com